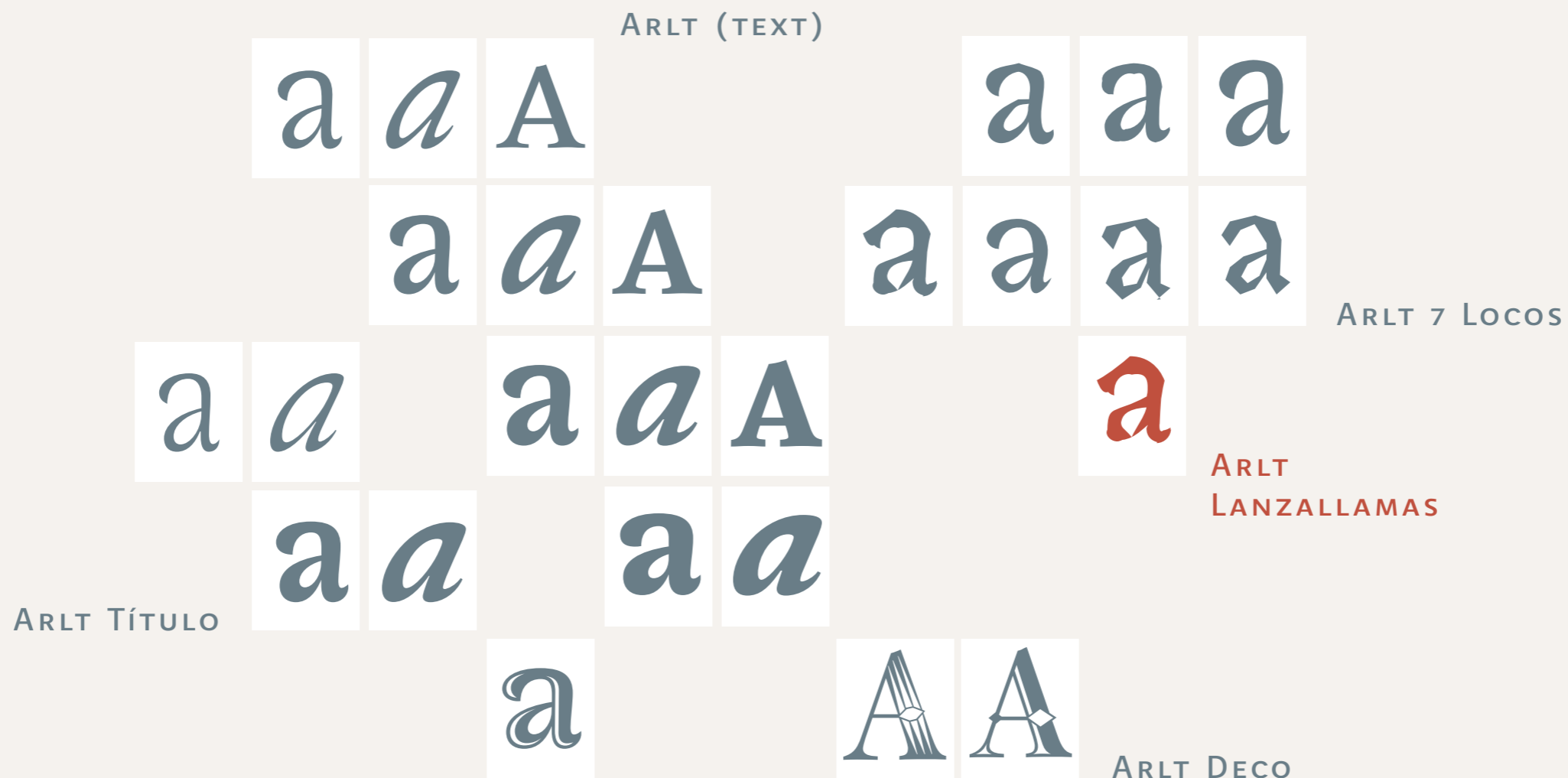




Arlt Lanzallamas

The latest addition to the Arlt family
is a living font!

Arlt, a system of 26 fonts



Arlt Lanzallamas is the latest addition to the **Arlt** family. It is a font based on a dynamic cycle. As you type in using Arlt Lanzallamas you will see the text changing its form. Using a database of 2,000 glyphs a built-in program makes the letterforms constantly **permute** until your text reaches the end of the text line. You can take advantage of this unique font within any OpenType-supported environment. **Have fun.** (Arlt Lanzallamas 36/32pt.)

Roberto Arlt, Argentinean writer from early 20th century, wrote some very original novels all of which ‘Siete locos’ (‘Seven Madmen’) is perhaps the most celebrated piece. The Arlt type family is based on his oeuvre. It has a Baroque style interpreted with an expressionist, contemporary flair. This means the type is full of intense contrasts and vivid, expressive feelings. (Arlt Lanzallamas 24/28pt.)

a a a a a a a a A A A

Arlt Lanzallamas characters repertoire is the sum of the complete Arlt 7 Locos sets, 7 fonts that are part of the family Arlt. Based on the fine Arlt text fonts, these **Arlt 7 Locos** were carefully destroyed to obtain 7 rough, expressive voices for the argot spoken by the personages Roberto Arlt created for his novel 'The Seven Madmen'.

(Arlt Lanzallamas Irregular 36/36pt.)

a a a a a a a

Arlt 7 Locos Jorobadito

Arlt 7 Locos Juguete Rabioso

Arlt 7 Locos Amor Brujo

Arlt 7 Locos Buscador de Oro

Arlt 7 Locos Astrólogo

Arlt 7 Locos Erdosain

Arlt 7 Locos Rufián Melancólico

Employing the whole **Arlt 7 Locos** database, **Arlt Lanzallamas** makes a constant rotation from one glyph to the other following a dynamic cycle that works in any OT-sensitive app, making your text alive!

(Arlt Lanzallamas Irregular 36/36pt.)



a a a a a a a

It **has** an e

It **has** an expressionist

It **has** an expressionist style

It **has** an expressionist style interpreted

It **has** an expressionist style interpreted with

It **has** an expressionist style interpreted with a contemporary

It **has** an expressionist style interpreted with a contemporary flair.



PampaType

independent font foundry